



**Full Commission Meeting**  
Friday 23<sup>rd</sup> June - 9.30 AM to 10.30AM  
University of Huddersfield

**Minutes**

**1. Welcome and introductions.**

A full list of attendees is appended (see Appendix 1 – Attendees)

**Appendix 1 – Attendees** Apologies were received from: Apologies were received from Abdul Ravat (AR), Jimmy Dickenson (JD), Jennifer Hirst (JH), Councillor Naheed Mather (NM), and Phil Sugden (PS).

**Minutes from previous meeting**

Professor Peter Roberts (PR) asked attendees to consider the minutes of the previous KCC meeting (14/04/23). No corrections were proposed, and the minutes were unanimously agreed upon. Attendees were reminded to email the secretariat promptly if they had any further issues or concerns.

**ACTION:** Secretariat to upload final version of minutes to website.

Minutes from previous meetings are available on the KCC website:  
<https://www.kirkleesclimate.org.uk/meeting-agendas-notes>

**2. Sub-group updates**

PR invited each of the sub-groups to provide an update to the wider Commission on recent activities.

Buildings & Homes

Chris Herring (CH) led the update.

No updates were provided as the sub-group is currently dormant. Decisions regarding future actions will be made after today's away day meeting.

### Community Engagement & Involvement

Tom Taylor (TT) led the update:

#### **Key points:**

- They have been working on community buildings network meetings and energy projects, which have received 50 expressions of interest.
- The plan is to bring community organizations together to conduct audits of community buildings.
- They have submitted a lottery climate action fund bid for Kirklees, with 60 expressions of interest received so far. More progress is expected by September.

#### **Discussion points:**

- PR inquired if the commission could assist with the project.
- TT responded that he has discussed this with the Commission Management group, and the Commission is named as an organization supporting the project. It was mentioned that the lottery bid could come through the commission, but the commission has limited capacity to manage such a fund. Other options discussed were the council or another partnership holding the fund.
- Kat suggested seeking support from Paul Mitchell for the bid writing process.
- Emma Andrews also mentioned the availability of assistance in bid writing.
- TT mentioned that he has already consulted with Paul Mitchell and that there is a small steering group consisting of Sal and Paul.

### Energy & Waste

GR stated no updates.

### Movement & Transport

John Allport (JA) led the update:

#### **Key points:**

- Dr. Alexandros Nikitas from the University of Huddersfield has volunteered to help the Commission. He is an expert on transport, logistics, and movement around cities and is eager to support the Commission.

- There was an event mentioned regarding the energy and integration lab, where they are integrating research on clean energy into the university's infrastructure. They are testing at a pilot scale and planning for rapid growth in the next 12 to 18 months. The event is focused on converting various waste streams, such as biogas and organic waste, into power and heat. They are also exploring the integration of this process for disposable medical waste on the medical campus.
- The launch event for this initiative will take place on July 4<sup>th</sup> a link has previously been sent to other commissioners.

**Discussion points:**

- Stuart Sugarman (SS) expressed interest in the medical waste aspect and mentioned that he has commissioned a company to explore waste-to-energy solutions.
- JA offered his advice if needed, as he is putting in a bid for waste-to-energy in Nigeria.
- SS highlighted the funding opportunities available in Africa for such projects.
- PR emphasized the importance of sustainable development and the aim of achieving ecological and social benefits from environmental actions. He suggested reaching out to the hospitals minister, who is from Kirklees, to discuss the need for facilities to manage medical waste.
- SS mentioned that there are funding opportunities that the NHS can tap into, and PR mentioned existing connections with the NHS Sustainable Development Unit.

Nature & the Countryside

Tony Newham (TN) led the update.

**Key points:**

- Working on carbon credit offsets, specifically in relation to wetlands and charcoal productions.
- They have collaborated with JA from the University of Huddersfield on biochar and its commercial viability, as well as exploring energy generation possibilities. The aim is to create a system that is commercially viable and does not run at a loss.

Young People

Lisa woods (LW) led the update.

**Key Points:**

- The Youth Panel have held meetings with schools, resulting in seven schools going for the eco schools' flag, with two more schools applying before the deadlines.
- The main challenge is getting schools to attend the meetings.
- Stuart Strathdee sends emails from Greenhead College regarding eco topics in high schools and colleges.

PR thanked Lisa for her work and mentioned that she is leaving the Climate Commission and will be moving to a new role in Slough.

## Business & Economic Activity

Bill Macbeth (BM) led the update.

### **Key points:**

- The sustainability strategy pilot evaluation was positive, resulting in transformational changes. They have raised an additional £100,000 to run another programme and are considering involving a pharmaceutical company. Selected ten companies for this. Two introductory workshops are scheduled for next week, and the programme will commence in September with 25 delegates.
  - A digital hub has secured £650,000 in Brighouse, based on a model in Tuscany. The hub supports smaller companies that lack the technology to implement their sustainable plans. They have submitted a bid to the shared prosperity fund for 1 million pounds.
  - We are working closely with the "Made Smarter" initiative to help SMEs with digital transformation.
  - BM mentioned the challenge of eligibility, as only companies (with dr level 4 which stands for digital readiness) with a digital transformation strategy funded and implemented are eligible. However, he is assisting companies in the hub to reach that level.
  - The sub-group is partnering with the University of Leeds for a £5.6 million bid for a competition called Green Transition Ecosystems. Research will focus on fashion and textiles to assess companies' awareness and understanding of transitioning to a circular economy. The goal is to map the region, identify support, and understand the main industry drivers. The programme will start in March next year and could be expanded to other sectors or groups.
  - BM also mentioned collaborating with West Yorkshire Combined Authority (WYCA) on sustainability and net-zero efforts, including skills development. They have launched a short sustainability champions network programme, with a level 3 programme over five weeks and plans to launch an evening version. A level 5 programme for senior-level individuals has been paused, and the importance of facilitation and support was highlighted.
3. **Generic Business Sustainability** - BM talked through the slides on Generic Business Sustainability (Presentation for this item are appended, see Appendix 2)

### **Discussion points:**

- During the presentation, TT raised concerns about community buildings struggling to acquire resources for audits.
- BM suggested positioning the initiative on skills and knowledge, as organizations need both to drive change.
- KS mentioned the issue of match funding and the limitations of using lottery funds for capital in buildings.
- BM acknowledged the challenges and emphasized the importance of skills, knowledge, and tools in putting together successful bids.
- GR asked about accreditation, and BM explained the possibilities for companies to work towards ISO certification and for individuals to obtain sustainability manager accreditation. The aim in the textiles industry is to reduce raw material usage by 50% by 2030.
- LW inquired about the potential for academies or trusts with multiple schools to participate in the program.
- BM reassured LW that it would not be a problem and emphasized the flexibility in working with schools, businesses, and voluntary organizations.
- PR recalled the past involvement of SMEs in such programs and suggested tapping into the experience within West Yorkshire.
- PR shared his past experience in helping businesses find savings, highlighting the motivation of many companies to engage in sustainability initiatives. Gideon mentioned a bid written by the university and his company, which incorporates the Commission into communication efforts and aims to pilot ESG (environmental, social, governance) projects for 20 organizations. If successful, the university plans to develop modules and units for wider implementation. He highlighted the need for robust claims to avoid greenwashing practices.
- PR mentioned that the Advertising Standards Authority (ASA) has become more vigilant in addressing greenwashing issues and cited examples involving Ryanair and banks.
- CH mentioned attending a symposium focusing on stakeholder engagement on energy efficiency in buildings. He is also working on a small bid related to this topic and emphasized the increasing collaboration with the university and Adrian, who is a member of the buildings group.

#### **4. Any Other Business**

- PR – Reminded commissioners about completing the membership form.
- TT also stated that if any commissioners at this point no longer wished to stay in their role, then it is important to let us know. Any commissioners who wish to fill out the membership form please contact the secretariat.

#### **Action**

- Commissioners who have not completed the membership form to do so as soon as possible or inform the secretariat about their intentions to remain as a commissioner.

#### **5. Meeting date forward plan:**

- Friday 21<sup>st</sup> July 2023 10.30 – 13.30 – University of Huddersfield and MS Teams

## Appendix 1 – Attendees

<b>Name</b>	<b>Initials</b>	<b>Role</b>
Professor Peter Roberts	PR	Chair of the Commission
Chris Herring	CH	Commissioner
Gideon Richards	GR	Commissioner
Kiran Bali	KB	Commissioner
Professor John Allport	JA	Commissioner
Stephen Moore	SM	Commissioner
Stuart Sugarman	SS	Commissioner
Tom Taylor	TT	Commissioner
Tony Newham	TN	Commissioner
Katherine Armitage	KA	Kirklees Council – Senior Officer Representative
Bill Macbeth	BM	Commissioner
John Atkinson	JAt	Secretariat
Karen Rispin	KR	Secretariat

## Appendix 2 – Generic Business Sustainability



# Sustainability and Net Zero Support for SMEs

ADD NAME & JOB TITLE

West Yorkshire Combined Authority

## West Yorkshire Business Support

Connecting West Yorkshire SMEs with the **right** support and funding, at the **right** time via the Business West Yorkshire Gateway (working title)

Access point for all business support and funding within West Yorkshire

Dedicated team of knowledgeable local Growth Managers

Increasing reach to a more diverse range of business owners

### We can help your business to:

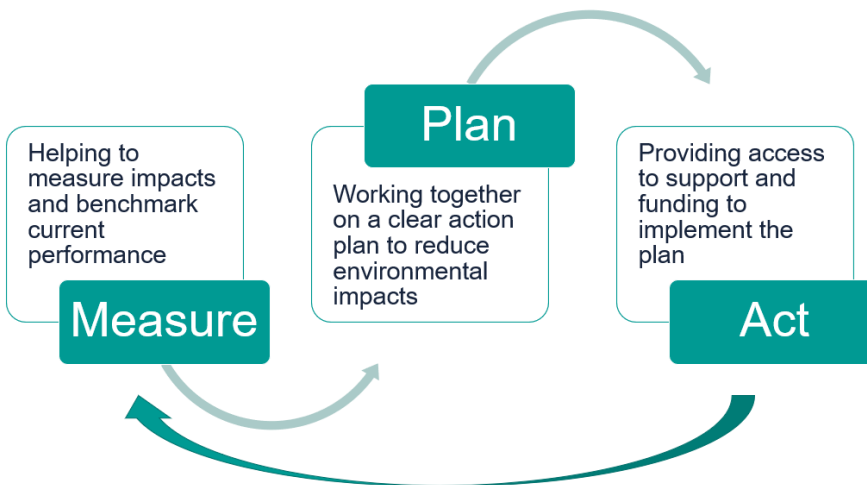
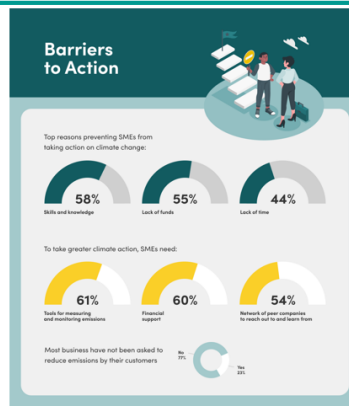
Become more sustainable 	Access new finance 	Invest in digital technologies 
Trade overseas 	Be more productive 	Start, develop and grow 
Develop your staff and improve work-placed culture 	Develop new products or processes 	Plan for the future to achieve your potential 

## Business support provision for 2023/24 (and beyond)

		Start, develop and grow	Access new finance	Invest in digital technologies	Develop your staff and improve work-placed culture	Be more productive	Develop new products or processes	Become more sustainable	Trade overseas	Plan for the future to achieve your potential
Business West Yorkshire	CA led programmes	Business sustainability support								
		Business productivity service								
		Innovation support								
		Enterprise West Yorkshire								
		Skills for Growth								
		SME Investment Fund								
		Creative Catalyst								
	Partner programmes	DIT								
		Digital Enterprise								
		Help to Grow Management								

## What is driving our approach to sustainability support?

- Target to reach net zero in West Yorkshire by 2038
- >99% of c95,000 regional businesses are SMEs
- SMEs account for around 50% of all business driven emissions
- 90% of large company emissions sit in their value chains – largely SMEs



## Measure

One of our Business Sustainability Managers (BSM) will get in touch to get to know your business. They will visit your site and complete an assessment with you looking at your businesses transport, waste, energy, water, pollution, etc.

They may even suggest some other tools to help you to measure and understand your business impacts in more detail:

- A resource efficiency review to look at resource use across your business
- A carbon footprint calculator
- A full environmental assessment to help you to take an in-depth look into your business impacts





## Plan

---

- When you have completed your initial assessment with our BSM, they will help you to build a plan to prioritise and address your impacts
- They will support you to develop this plan as you work through any additional data collection activities such as calculating your carbon footprint
- This plan will help us to identify the other support we can help you to put in place so that you can start to improve your business sustainability in a planned and meaningful way

## Act

---

Once you have a plan in place you can begin to access support to help to improve your business including:

- Consultancy support to investigate opportunities to make your business more circular
- Grant support towards:
  - consultancy support to develop your plans further (50% intervention up to a maximum grant of £5,000)
  - measures to improve your business flood resilience (50% intervention – minimum grant £10,000 to maximum £100,000)
  - capital expenditure to reduce your environmental impact (30% intervention up to a maximum grant of £30,000)
- Referral to other support

## Peer support and learning

---

Our ambition is to create a network of businesses focused on mutual support towards net zero, sustainability and climate readiness:

- Peer to peer support
- Webinars and events
- Localised demand-led support interventions
- Supporting an online resource sharing platform
- Piloting industrial symbiosis
- Accreditation?
- Awards?



## Core eligibility

---

- SME business based in West Yorkshire
- Open to any business undertaking economic activity
  - Targeted at those with 10 – 100 employees
- Sector agnostic (B2B, B2C)
- Public Subsidy rules will apply under Minimal Financial Assistance

## Get in touch

---

<https://www.the-lep.com/business-support/growth-support/sustainability/>

@LeedsCityRegion

[Businesssupport@the-lep.com](mailto:Businesssupport@the-lep.com)

0113 348 1818